

LANDS' END SCHOOL



St Francis Xavier School

808 Linden Ave

Wilmette IL 60091

Preferred School Number

900059056

Welcome to Lands' End School!

Guaranteed Period ®

If you're not satisfied with any item, simply return it to us at any time for an exchange or refund of its purchase price.

Pass-along Quality

We're serious about comfort, construction and durability; so our products hold up from the first day of school to the last (and through the next kid in line!).

Customer Service

Our school uniform phone operators are available year 'round, and knowledgeable customer service reps can help you with any size order.

School Rewards Program

We contribute a portion of the sales from your uniform purchases back to your school.

Sizing Options

We have more uniform choices than ever in Slim, Plus, and Husky sizes.

1-800-469-2222

landsend.com/school

Copyright 2011, Lands' End, Inc. All rights reserved.

Preferred School Number

900059056

1-800-469-2222 • landsend.com/school

Last Updated:

Page 1 of 10

08/19/11



One Heart

One Heart Logo

Logo #0888009K

Per Item Logo Application Fee: \$5.50

- Logo is restricted and may only be applied to the approved items listed in your dress code below
- Personalized monograms are allowed with this logo

Special Notes:

Girls'/Women's

Short Sleeve Feminine Fit Mesh Polo

100% Cotton



Style

230948-BP4 LITTLE GIRLS: S-L
 230949-BP9 GIRLS: S-XL
 396035-BP8 GIRLS PLUS: M-XL
 230950-BP1 WOMENS: XXS-XL

Size

Approved Colors

CLASSIC NAVY
WHITE

School Guidelines

LOGO # 0888009K OPTIONAL ON WHITE FOR ONE HEART CLUB

Long Sleeve Feminine Fit Mesh Polo

100% Cotton



Style

230951-BP6 LITTLE GIRLS: S-L
 230952-BP0 GIRLS: S-XL
 396036-BP2 GIRLS PLUS: M-XL
 230953-BP5 WOMENS: XXS-XL

Size

Approved Colors

CLASSIC NAVY
WHITE

School Guidelines

LOGO # 0888009K OPTIONAL ON WHITE FOR ONE HEART CLUB

Short Sleeve Feminine Fit Interlock Polo

100% Cotton



<u>Style</u>	<u>Size</u>
230954-BPX	LITTLE GIRLS: S-L
230955-BP4	GIRLS: S-XL
396033-BP9	GIRLS PLUS: M-XL
230956-BP9	WOMENS: XXS-XL

Approved Colors
CLASSIC NAVY
WHITE

School Guidelines
LOGO # 0888009K OPTIONAL ON WHITE
FOR ONE HEART CLUB

Long Sleeve Feminine Fit Interlock Polo

100% Cotton



<u>Style</u>	<u>Size</u>
230957-BP3	LITTLE GIRLS: S-L
230958-BP8	GIRLS: S-XL
396034-BP3	GIRLS PLUS: M-XL
230959-BP2	WOMENS: XXS-XL

Approved Colors
CLASSIC NAVY
WHITE

School Guidelines
LOGO # 0888009K OPTIONAL ON WHITE
FOR ONE HEART CLUB

Short Sleeve Plain Collar Knit Peter Pan

100% Cotton



<u>Style</u>	<u>Size</u>
350062-BP0	LITTLE GIRLS: S-L
350064-BPX	GIRLS: S-XL
350067-BP3	WOMENS: S-XL

Approved Colors
WHITE

School Guidelines
LOGO NOT ALLOWED

Long Sleeve Plain Collar Knit Peter Pan

100% Cotton



Style

350068-BP8 LITTLE GIRLS: S-L
350071-BPX GIRLS: S-XL
350072-BP4 WOMENS: S-XL

Size

Approved Colors

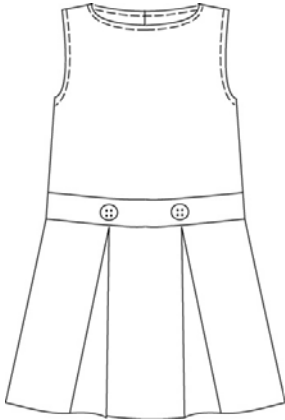
WHITE

School Guidelines

LOGO NOT ALLOWED

Solid Jumper

65% Polyester / 35% Rayon



Style

068175-BP9 LITTLE GIRLS: 4-6X
068176-BP3 GIRLS: 7-16
068177-BP8 GIRLS PLUS: 7-16

Size

Approved Colors

CLASSIC NAVY

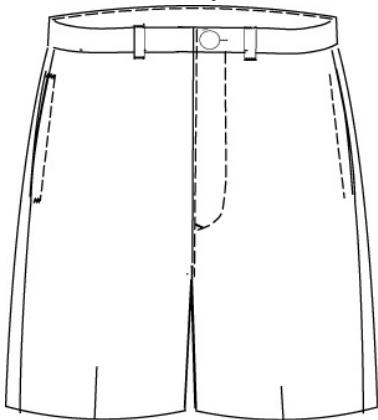
School Guidelines

LOGO NOT ALLOWED

THIS ITEM MAY BE WORN ONLY BY THE
IRISH DANCE CLUB

Plain Front Blended Chino Shorts

60% Cotton / 40% Polyester



Style

403774-BP2 LITTLE GIRLS: 4-6X
403775-BP7 LITTLE GIRLS SLIM:
4-6X
403776-BP1 GIRLS: 7-16
403777-BP6 GIRLS SLIM: 7-16
403778-BP0 GIRLS PLUS: 7-16
403783-BP1 JUNIOR: 1-13
403782-BP7 WOMENS: 6-18

Size

Approved Colors

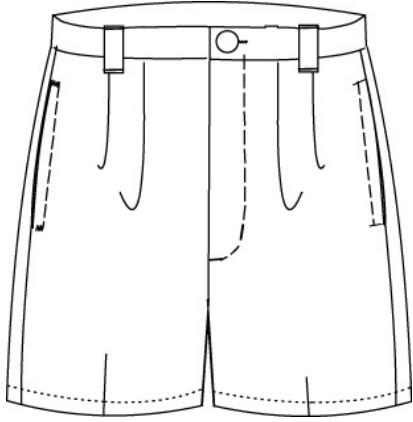
KHAKI

School Guidelines

LOGO NOT ALLOWED

Pleat Front Blended Chino Shorts

60% Cotton / 40% Polyester



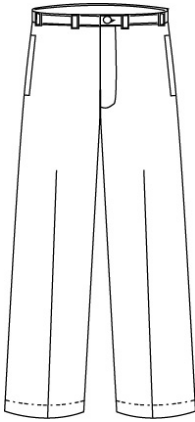
<u>Style</u>	<u>Size</u>
403780-BP8	LITTLE GIRLS: 4-6X
403781-BP2	GIRLS: 7-16
403779-BP5	WOMENS: 4-18

Approved Colors
KHAKI

School Guidelines
LOGO NOT ALLOWED

Plain Front Stretch Chino Pants

98% Cotton / 2% spandex



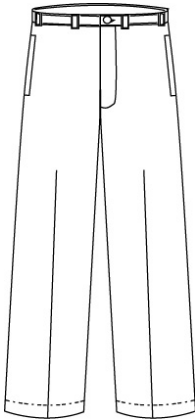
<u>Style</u>	<u>Size</u>
403671-BP6	LITTLE GIRLS: 4-6X
403672-BP0	LITTLE GIRLS SLIM: 4-6X
403673-BP5	GIRLS: 7-16
403674-BPX	GIRLS SLIM: 7-16
403675-BP4	GIRLS PLUS: 7-16

Approved Colors
KHAKI

School Guidelines
LOGO NOT ALLOWED

Plain Front Blended Chino Pants

60% Cotton / 40% Polyester



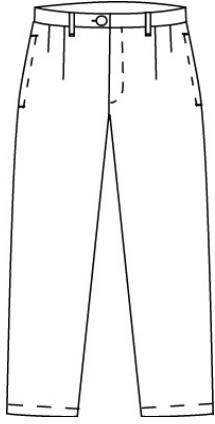
<u>Style</u>	<u>Size</u>
403665-BP0	TODDLER: 2T-4T
403666-BP5	LITTLE GIRLS: 4-6X
403667-BPX	LITTLE GIRLS SLIM: 4-6X
403668-BP4	GIRLS: 7-16
403669-BP9	GIRLS SLIM: 7-16
403670-BP1	GIRLS PLUS: 7-16
404343-BP8	JUNIOR: 1-13
403664-BP6	WOMENS: 4-18

Approved Colors
KHAKI

School Guidelines
LOGO NOT ALLOWED

Pleat Front Chino Pants

60% Cotton / 40% Polyester



<u>Style</u>	<u>Size</u>
403659-BP5	LITTLE GIRLS: 4-6X
403661-BP2	GIRLS: 7-16
403654-BP2	WOMENS: 4-18

Approved Colors
KHAKI

School Guidelines
LOGO NOT ALLOWED

Co-Ed

Short Sleeve Mesh Polo

100% Cotton Mesh



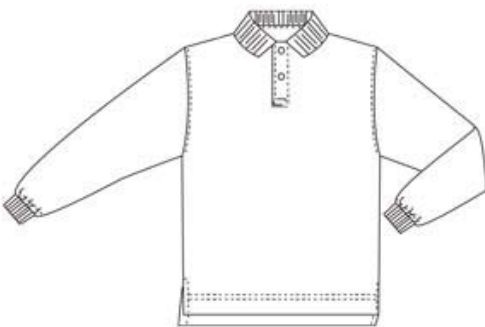
<u>Style</u>	<u>Size</u>
051465-BPX	TODDLERS: 2T-4T
051467-BP9	LITTLE KIDS: S-L
051469-BP8	BIG KIDS: S-XL
396031-BPX	BIG KIDS HUSKY: M-XL
167542-BP2	WOMENS: S-XL
167541-BP8	MENS: S-XL

Approved Colors
CLASSIC NAVY
WHITE

School Guidelines
LOGO # 0888009K OPTIONAL ON WHITE
FOR ONE HEART CLUB

Long Sleeve Mesh Polo

100% Cotton Mesh



<u>Style</u>	<u>Size</u>
051422-BP1	TODDLERS: 2T-4T
051437-BP8	LITTLE KIDS: S-L
051438-BP2	BIG KIDS: S-XL
396032-BP4	BIG KIDS HUSKY: M-XL
167540-BP3	WOMENS: S-XL
167539-BP0	MENS: S-XXL

Approved Colors
CLASSIC NAVY
WHITE

School Guidelines
LOGO # 0888009K OPTIONAL ON WHITE
FOR ONE HEART CLUB

Short Sleeve Interlock Polo

100% Cotton Interlock



<u>Style</u>	<u>Size</u>
051377-BPX	LITTLE KIDS: S-L
051402-BP4	BIG KIDS: S-XL
396029-BP2	BIG KIDS HUSKY: M-XL
313702-BPX	WOMENS: S-XL
313701-BP5	MENS: S-XL

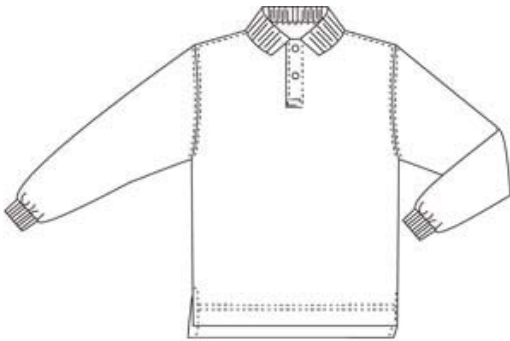
Approved Colors
CLASSIC NAVY
WHITE

School Guidelines

LOGO # 0888009K OPTIONAL ON WHITE
FOR ONE HEART CLUB

Long Sleeve Interlock Polo

100% Cotton Interlock



<u>Style</u>	<u>Size</u>
051356-BP8	LITTLE KIDS: S-L
051369-BP5	BIG KIDS: S-XL
396030-BP5	BIG KIDS HUSKY: M-XL
313699-BP1	WOMENS: S-XL
313700-BP0	MENS: S-XL

Approved Colors
CLASSIC NAVY
WHITE

School Guidelines

LOGO # 0888009K OPTIONAL ON WHITE
FOR ONE HEART CLUB

Polar Fleece Jacket

100% Polyester



<u>Style</u>	<u>Size</u>
188727-BP7	LITTLE KIDS: S-L
188726-BP2	BIG KIDS: S-XL
188724-BP3	WOMENS: S-XL
188725-BP8	MENS: S-XXL

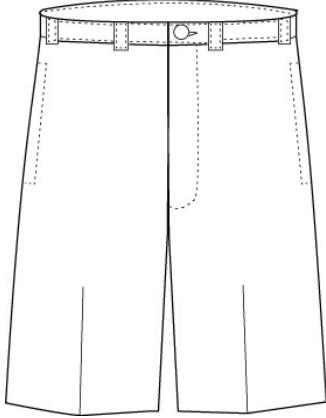
Approved Colors
CLASSIC NAVY

School Guidelines

LOGO NOT ALLOWED

Plain Front Stain/Wrinkle Resistant Chino Shorts

100% Combed Cotton Twill



Style

231161-BPX LITTLE BOYS: 4-7
231162-BP4 LITTLE BOYS SLIM:
4-7
231164-BP3 BOYS: 8-20
231167-BP7 BOYS SLIM: 8-20
231168-BP1 BOYS HUSKY: 8-20
404347-BP6 YOUNG MEN: 27-32
231170-BP9 MENS: 30-44 EVEN,
31-37 ODD

Size

Approved Colors

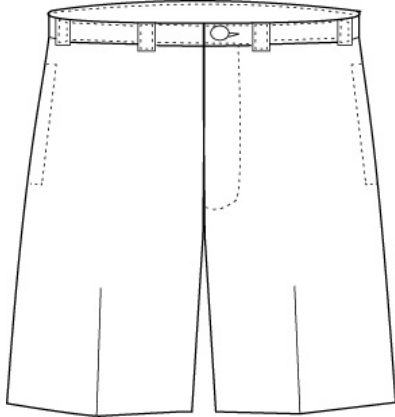
KHAKI

School Guidelines

LOGO NOT ALLOWED

Plain Front Blended Chino Shorts

60% Cotton / 40% Polyester



Style

184383-BP2 LITTLE BOYS: 4-7
231174-BP7 LITTLE BOYS SLIM:
4-7
184384-BP7 BOYS: 8-20
231175-BP1 BOYS SLIM: 8-20
231176-BP6 BOYS HUSKY: 8-20
241937-BP9 MENS: 30-44 EVEN,
31-37 ODD

Size

Approved Colors

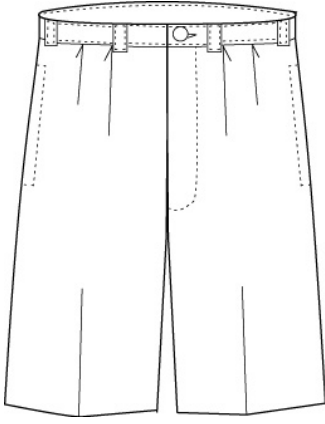
KHAKI

School Guidelines

LOGO NOT ALLOWED

Pleat Front Blended Chino Shorts

60% Cotton / 40% Polyester



Style

231149-BP9 LITTLE BOYS: 4-7
231151-BP6 LITTLE BOYS SLIM:
4-7
231152-BP0 BOYS: 8-20
231154-BPX BOYS SLIM: 8-20
231155-BP4 BOYS HUSKY: 8-20
231156-BP9 MENS: 30-44 EVEN,
31-37 ODD

Size

Approved Colors

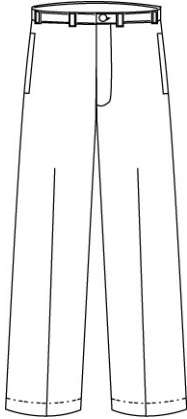
KHAKI

School Guidelines

LOGO NOT ALLOWED

Plain Front Stain/Wrinkle Resistant Chino Pants

100% Cotton



Style

403850-BPX TODDLER: 2T-4T
403851-BP4 LITTLE BOY: 4-7
403852-BP9 LITTLE BOY SLIM: 4-7
403853-BP3 BOYS: 8-20
403854-BP8 BOYS SLIM: 8-20
403855-BP2 BOYS HUSKY: 8-20
403856-BP7 YOUNG MEN: 27-32
243850-BP5 MENS: 30-44 EVEN,
31-37 ODD

Size

Approved Colors

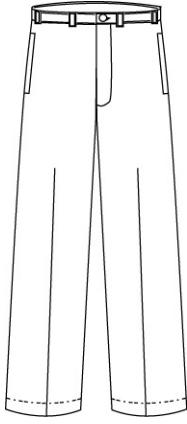
KHAKI

School Guidelines

LOGO NOT ALLOWED

Plain Front Blended Chino Pants

60% Cotton / 40% Polyester



Style

403845-BP9 LITTLE BOYS: 4-7
403846-BP3 LITTLE BOYS SLIM:
4-7
403847-BP8 BOYS: 8-20
403848-BP2 BOYS SLIM: 8-20
403849-BP7 BOYS HUSKY: 8-20
403862-BP2 YOUNG MEN: 27-32
191130-BP0 MENS: 30-44 EVEN,
31-37 ODD

Size

Approved Colors

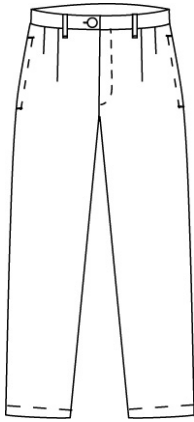
KHAKI

School Guidelines

LOGO NOT ALLOWED

Pleat Front Stain/Wrinkle Resistant Chino Pants

100% Cotton



Style

403857-BP1 LITTLE BOYS: 4-7
403858-BP6 BOYS SLIM: 4-7
403859-BP0 BOYS: 8-20
403860-BP3 BOYS SLIM: 8-20
403861-BP8 BOYS HUSKY: 8-20

Size

Approved Colors

KHAKI

School Guidelines

LOGO NOT ALLOWED

Your school's Dress Code – as determined by your school's program administrator – is outlined in this document. The purchase of ANY Lands' End School Uniforms product includes a contribution to your school. However, ONLY the items listed in your dress code are approved for school use. If you need assistance placing an order, please call 1-800-469-2222.